

Room 1 – Darke Room

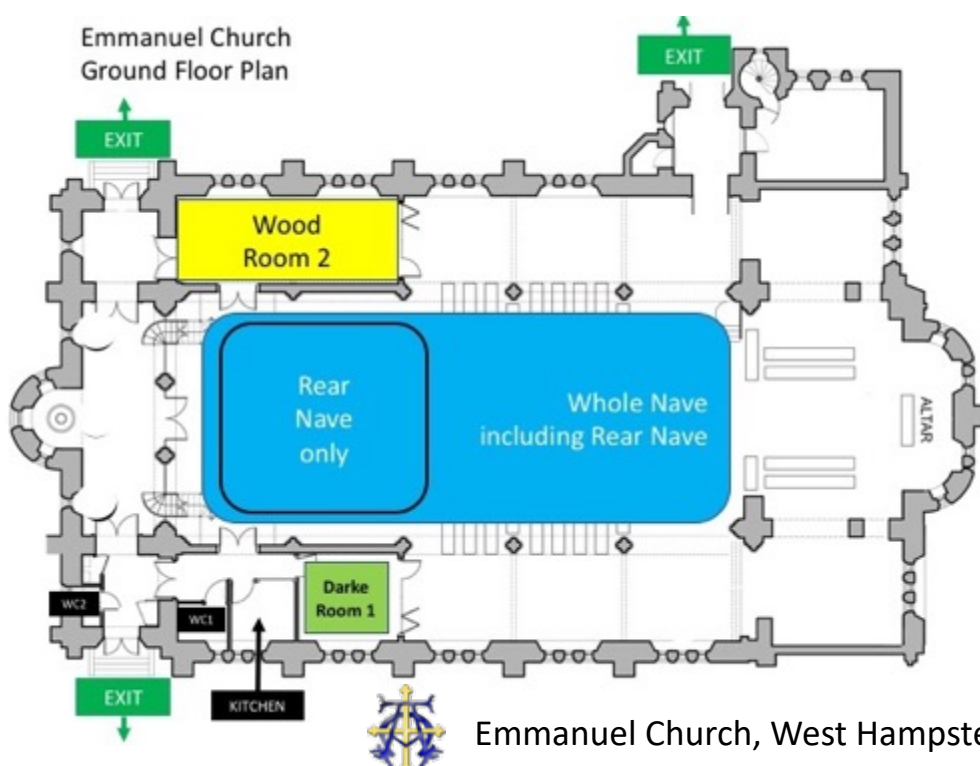
Rate: (see website)



Specifications:

Size:	16 m ² / 172 ft ²
Max Capacity:	20 (standing), 12 (seated/tables)
Other notes:	ground floor, step-free access two entry/exit doors Upright piano dimnable lighting, clock
Toilets (ground level):	WC1: toilet, sink, baby changing, shower, disabled access WC2: toilet, sink, mirror

Available upon request: folding chair(s), table(s), access to full kitchen.



Emmanuel Church, West Hampstead

Room 2 – Wood Room

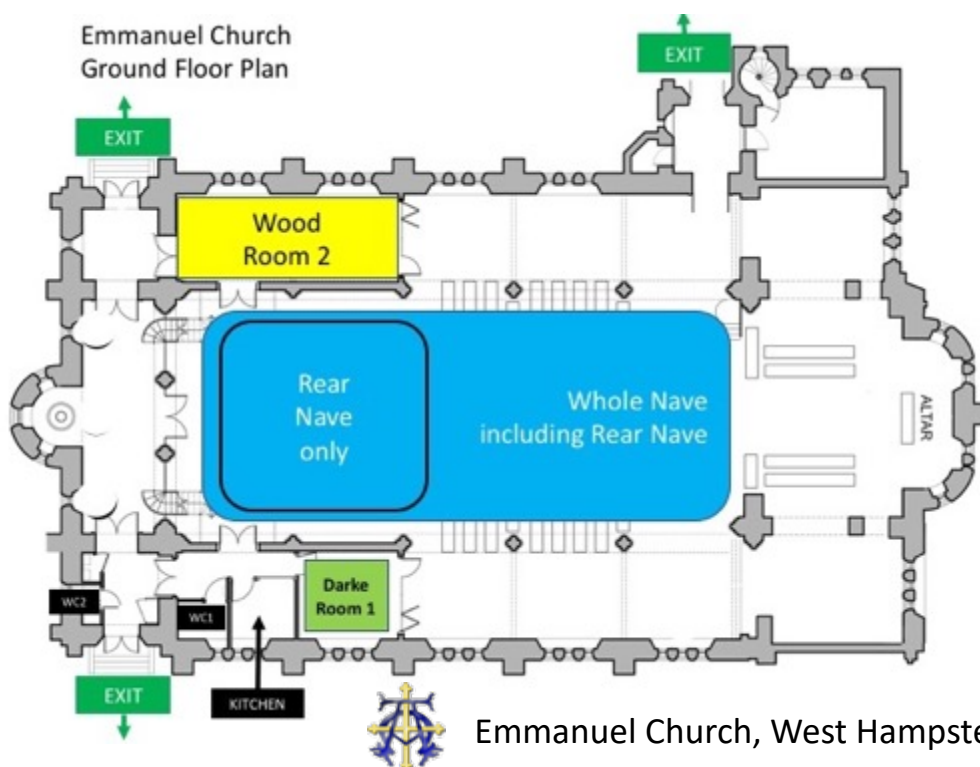
Rate: (see website)



Specifications:

Size:	35 m ² / 377 ft ²
Max Capacity:	47 (standing), 26 (seated/tables)
Other notes:	ground floor, step-free access three entry/exit doors dimmable lighting, clock
Toilets (ground level):	WC1: toilet, sink, baby changing, shower, disabled access WC2: toilet, sink, mirror

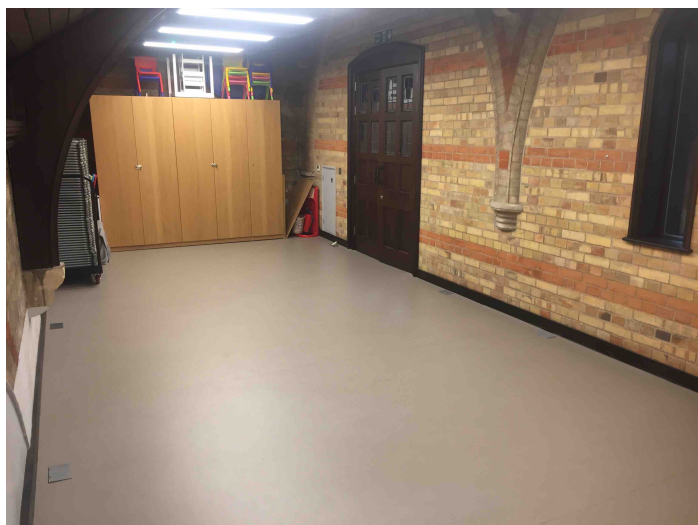
Available upon request: folding chair(s), table(s), access to full kitchen



Emmanuel Church, West Hampstead

Room 3 – Julian Room

Rate: (see website)



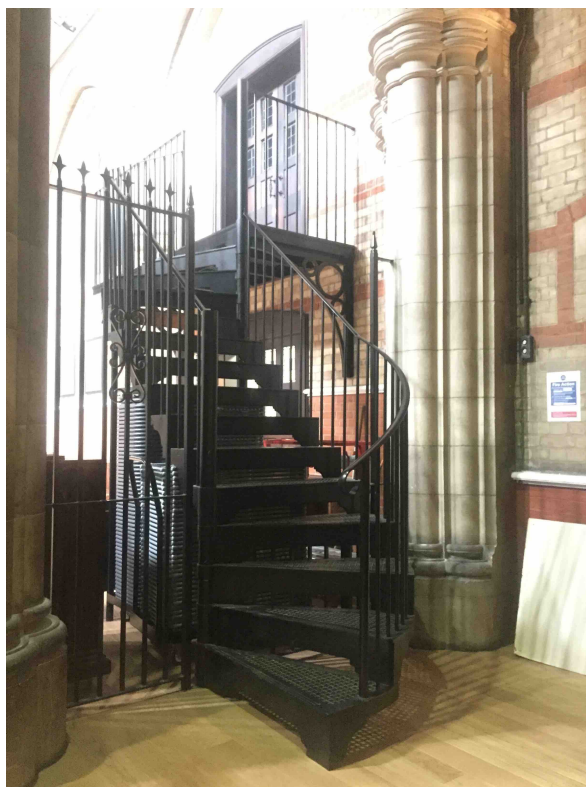
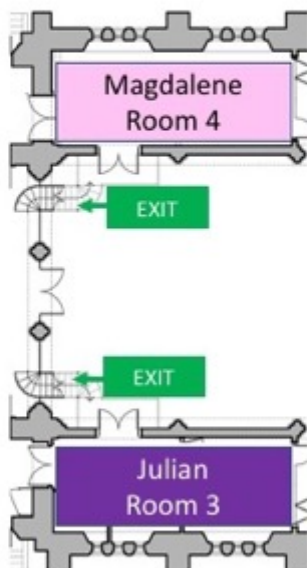
Specifications:

Size: 35 m² / 377 ft²
Max Capacity: 47 (standing), 26 (seated/tables)
Other notes: mezzanine, 15 steps
single entry/exit door
dimmable lighting, clock

Toilets (ground level): WC1: toilet, sink, baby changing, shower, disabled access
WC2: toilet, sink, mirror

Available upon request: folding chair(s), table(s), access to full kitchen

Emmanuel Church
Mezzanine Plan



Emmanuel Church, West Hampstead

— DIOCESE OF —
LONDON
EDMONTON AREA

Room 4 – Magdalene Room

Rate: (see website)



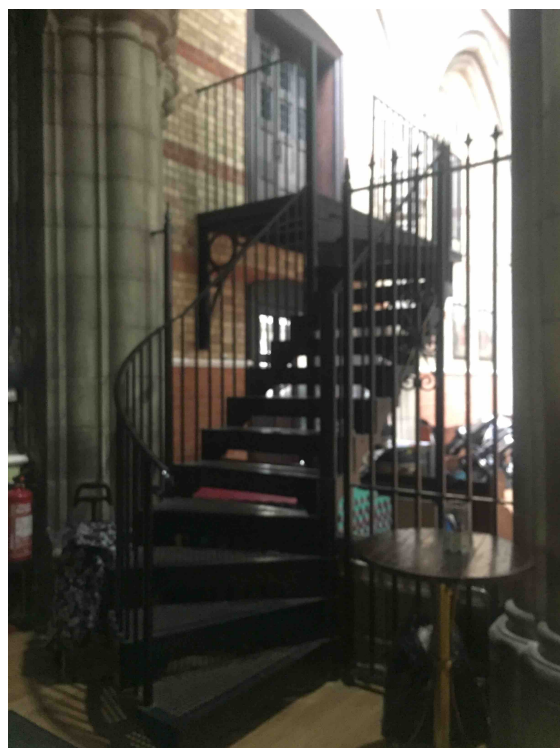
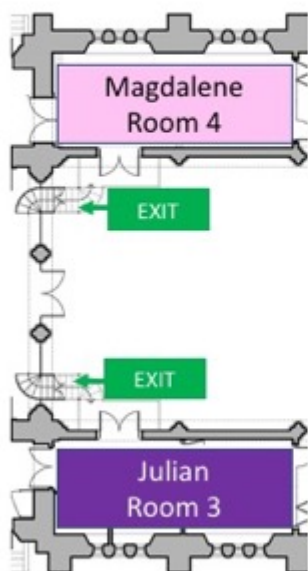
Specifications:

Size: 35 m² / 377 ft²
Max Capacity: 47 (standing), 26 (seated/tables)
Other notes: mezzanine, 15 steps
single entry/exit door
dimmable lighting, clock

Toilets (ground level): WC1: toilet, sink, baby changing, shower, disabled access
WC2: toilet, sink, mirror

Available upon request: folding chair(s), table(s), access to full kitchen

Emmanuel Church
Mezzanine Plan



Emmanuel Church, West Hampstead

— DIOCESE OF —
LONDON
EDMONTON AREA

Nave (including rear nave)

Rate: (see website)

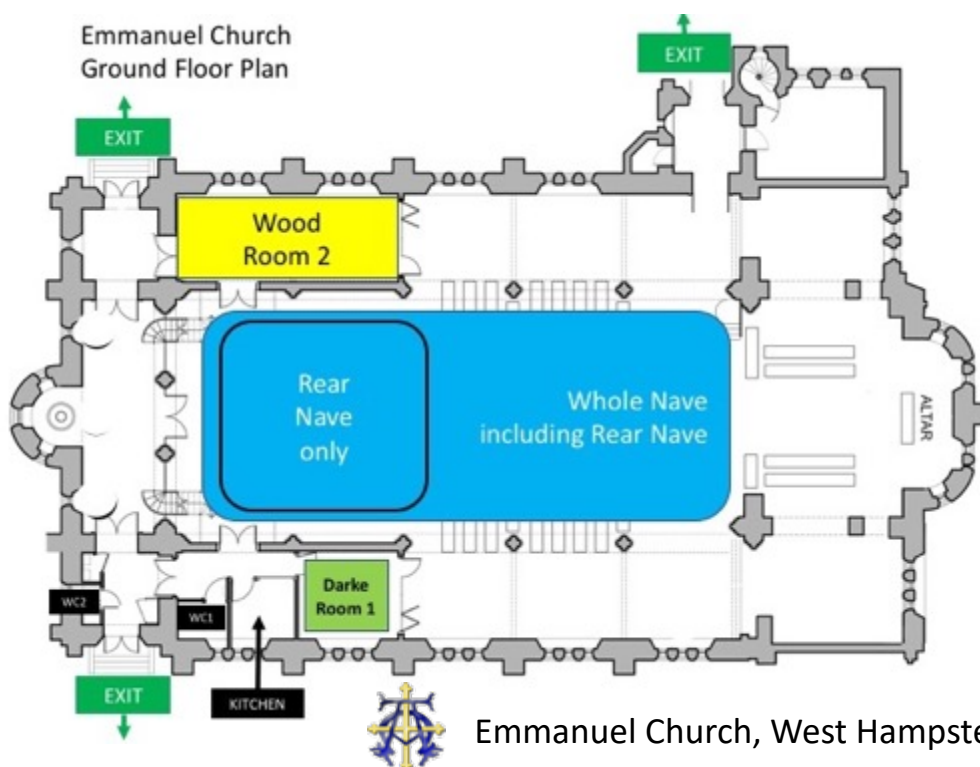


Specifications:

Size: whole church nave
Max Capacity: 350 (standing), 220 (seated, pews) + 80 (seated, folding chairs)
Other notes: ground floor, step-free access (Fortune green entrance)
18 pews/benches
three entry/exit doors

Toilets (ground level): WC1: toilet, sink, baby changing, shower, disabled access
WC2: toilet, sink, mirror

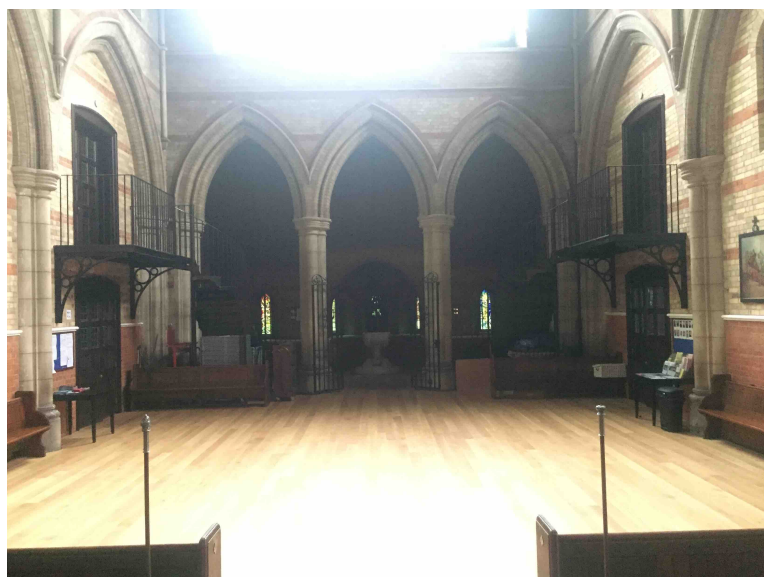
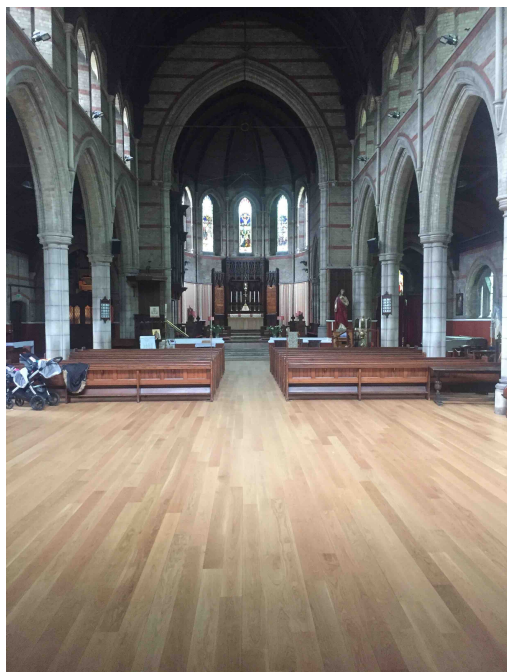
Available upon request: folding chair(s), table(s), access to full kitchen



Emmanuel Church, West Hampstead

Nave (rear nave only)

Rate: (see website)



Specifications:

Size: 103 m² / 1109 ft²
Max Capacity: 135 (standing), 75 (seated), 50 (seated tables)
Other notes: ground floor, step-free access (Fortune green entrance)
18 pews/benches
three entry/exit doors

Toilets (ground level): WC1: toilet, sink, baby changing, shower, disabled access
WC2: toilet, sink, mirror

Available upon request: folding chair(s), table(s), access to full kitchen

